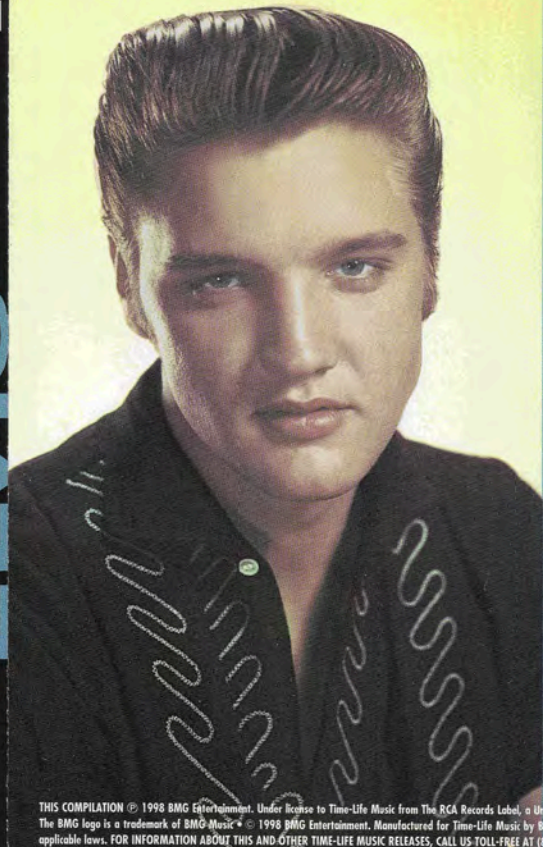


# ELVIS

THE ELVIS PRESLEY COLLECTION



## Disc One

1. YOU DON'T HAVE TO SAY YOU LOVE ME
2. WITHOUT LOVE (THERE IS NOTHING)
3. IN THE GHETTO
4. MEMORIES
5. MAMA LIKED THE ROSES
6. SPANISH EYES
7. I'M LEAVIN'
8. LET IT BE ME
9. MARY IN THE MORNING
10. IT'S ONLY LOVE
11. FOOL
12. I'VE LOST YOU
13. DANNY BOY
14. HURT
15. MY WAY

## Disc Two

1. ONLY THE STRONG SURVIVE
2. ANY DAY NOW
3. DON'T CRY DADDY
4. IF I CAN DREAM
5. FOOLS RUSH IN (WHERE ANGELS FEAR TO TREAD)
6. BRIDGE OVER TROUBLED WATER
7. IT'S IMPOSSIBLE
8. AN AMERICAN TRILOGY
9. RAGS TO RICHES
10. FOR OL' TIMES SAKE
11. MY BOY
12. PIECES OF MY LIFE
13. THE LAST FAREWELL
14. I'LL NEVER FALL IN LOVE AGAIN
15. PLEDGING MY LOVE
16. **UNRELEASED BONUS CUT:**  
SEPARATE WAYS

THIS COMPILATION © 1998 BMG Entertainment. Under license to Time-Life Music from The RCA Records Label, a Unit of BMG Entertainment • Tmk(s) © Registered • Marca(s) Registrada(s) © General Electric Co., USA • The BMG logo is a trademark of BMG Music • © 1998 BMG Entertainment. Manufactured for Time-Life Music by BMG Distribution, a Unit of BMG Entertainment. Printed in U.S.A. Unauthorized duplication is a violation of applicable laws. FOR INFORMATION ABOUT THIS AND OTHER TIME-LIFE MUSIC RELEASES, CALL US TOLL-FREE AT (800) 488-4669, OR WRITE TO TIME-LIFE MUSIC, 1450 E. PARHAM ROAD, RICHMOND, VA 23280-2300.



# ELVIS

THE ELVIS PRESLEY COLLECTION

1. YOU DON'T HAVE TO SAY YOU LOVE ME
2. WITHOUT LOVE (THERE IS NOTHING)
3. IN THE GHETTO
4. MEMORIES
5. MAMA LIKED THE ROSES
6. SPANISH EYES
7. I'M LEAVIN'
8. LET IT BE ME
9. MARY IN THE MORNING
10. IT'S ONLY LOVE
11. FOOL
12. I'VE LOST YOU
13. DANNY BOY
14. HURT
15. MY WAY

TIME  
LIFE  
MUSIC



BMG

R806-03

07863-69402-2

© 1998 BMG Entertainment. Manufactured for Time-Life Music by BMG Distribution, a Unit of BMG Entertainment, Made in U.S.A.  
General Electric Co., USA • The BMG logo is a trademark of BMG Music • © 1998  
BMG Entertainment • TM (reg) • Registered • Music (reg) • Registratrad (reg)

THIS COMPILATION © 1998 BMG Entertainment. Under license to Time-Life Music from the RCA Records Company.

# ELVIS

THE ELVIS PRESLEY COLLECTION

1. ONLY THE STRONG SURVIVE
2. ANY DAY NOW
3. DON'T CRY DADDY
4. IF I CAN DREAM
5. FOOLS RUSH IN (WHERE ANGELS  
FEAR TO TREAD)
6. BRIDGE OVER TROUBLED WATER
7. IT'S IMPOSSIBLE
8. AN AMERICAN TRIOLOGY
9. RAGS TO RICHES
10. FOR OL' TIMES SAKE
11. MY BOY
12. PIECES OF MY LIFE
13. THE LAST FAREWELL
14. I'LL NEVER FALL IN  
LOVE AGAIN
15. PLEDGING MY LOVE
16. SEPARATE WAYS

TIME  
LIFE

RCMA

BMG

R806-03

07863-69402-2

2

© 1998 BMG Entertainment • Time-Life Music is a trademark of Time-Life Music • © 1998 General Electric Co., USA • The BMG logo is a trademark of BMG Music • © 1998

THIS COMPILATION © 1998 BMG Entertainment. Under license to Time-Life Music from the RCA Records.

Manufactured for Time-Life Music by BMG Distribution, a Unit of BMG Entertainment, Made in U.S.A.

## 1

**1. YOU DON'T HAVE TO SAY YOU LOVE ME**

Music by Giuseppe Donaggio,  
English lyrics by Vicki Wickham  
and Simon Napier-Bell.  
RCA 47-9916 (1970) No. 11\*  
EMI Miller Catalog Inc. ASCAP.

**2. WITHOUT LOVE (THERE IS NOTHING)**

Music and lyrics by Danny Small.  
RCA LP LSP-6020 (1969)  
Did not chart.  
Gomace Music Inc./Unichappell  
Music Inc. BMI.

**3. IN THE GHETTO**

Music and lyrics by Mac Davis.  
RCA 47-9741 (1969) No. 3\*  
Screen Gems-EMI Music Inc./  
R and H Music Elvis Presley. BMI.

**4. MEMORIES**

Music and lyrics by Billy Strange  
and Mac Davis.  
RCA 47-9731 (1969) No. 35\*  
R and H Music Elvis Presley. BMI.

**5. MAMA LIKED THE ROSES**

Music and lyrics by  
Johnny Christopher.  
RCA 47-9835 (1970)  
Did not chart.  
Screen Gems-EMI Music Inc. BMI.

**6. SPANISH EYES**

Music by Bert Kaempfert, lyrics  
by Eddie Snyder and Charles  
Singleton.  
RCA LP CPL-0475 (1974)  
Did not chart.  
Doma Edition Bert Kaempfert.  
GEMA. Screen Gems-EMI Music  
Inc. BMI.

**7. I'M LEAVIN'**

Music and lyrics by Sonny Charles  
and Michael Robert Jarrett.  
RCA 47-9998 (1971) No. 36\*  
R and H Music Elvis Presley. BMI.

**8. LET IT BE ME**

Music by Gilbert Becaud, English  
lyrics by Mann Curtis.  
RCA LP LSP-4362 (1970)  
Did not chart.  
Gambi Music Inc./Twenty Nine  
Black Music. BMI.

**9. MARY IN THE MORNING**

Music and lyrics by Johnny Cymbal  
and Michael Rashkow.  
RCA LP LSP-4445 (1970)  
Did not chart.  
Music Corporation of America Inc.  
BMI. MCA Music Publishing. ASCAP.

**10. IT'S ONLY LOVE**

Music and lyrics by Mark James  
and Steve Tyrell.  
RCA 48-1017 (1971) No. 51\*  
Screen Gems-EMI Music Inc. BMI.

**11. FOOL**

Music and lyrics by Carl Sigman  
and Hans Last.  
RCA 74-0910 (1973)  
Did not chart.  
Gladys Music/Intersong USA Inc.  
ASCAP.

**12. I'VE LOST YOU**

Music and lyrics by Kenneth  
Mackintosh and Alan Blaikley.  
RCA 47-9873 (1970) No. 32\*  
Gladys Music. ASCAP.

**13. DANNY BOY**

Music and lyrics by Fred Wetherly  
and Hazel O'Connor.  
RCA LP APL-1506 (1976)  
Did not chart.  
Incomplete Music Inc. BMI.

**14. HURT**

Music and lyrics by Jimmie Crane  
and Al Jacobs.  
RCA PB-10601 (1976)  
No. 28\*  
EMI Miller Catalog Inc. ASCAP.

**15. MY WAY**

Music by Jacques Revaux, English  
lyrics by Paul Anka.  
RCA PB-11165 (1977)  
No. 22\*  
Eddie Barclay Editions/Jeune  
Musique Editions Soc. SACEM.  
Chrysalis Standards Inc. BMI.

*A still from the Trouble  
medley, Singer Presents  
Elvis, December 1968.*





**1. ONLY THE STRONG SURVIVE**

Music and lyrics by Kenny Gamble, Leon Huff and Jerry Butler.  
RCA LP LSP-4155 (1969)  
Did not chart.  
Ensign Music Corporation/  
Warner-Tamerlane Publ. Corp.  
BMI.

**2. ANY DAY NOW**

Music and lyrics by Bob Hilliard and Burt Bacharach.  
RCA 47-9741 (1969)  
Did not chart.  
Feadbach Music/Bourne Co.  
ASCAP.

**3. DON'T CRY DADDY**

Music and lyrics by Mac Davis.  
RCA 47-9768 (1969) No. 6\*  
Elvis Presley Music/Screen Gems-EMI Music Inc. BMI.

**4. IF I CAN DREAM**

Music and lyrics by Walter Earl Brown.  
RCA 47-9670 (1968)  
No. 12\*  
Gladys Music. ASCAP.

**5. FOOLS RUSH IN (WHERE ANGELS FEAR TO TREAD)**

Music by Rube Bloom, lyrics by Johnny Mercer.  
RCA LP LSP-4671 (1972)  
Did not chart.  
Bregman Vocco and Conn Inc./Mercer Music. ASCAP.

**6. BRIDGE OVER TROUBLED WATER**

Music and lyrics by Paul Simon.  
RCA LP LSP-4445 (1970)  
Did not chart.  
Paul Simon. BMI.

**7. IT'S IMPOSSIBLE**

Music by Armando Manzanero, English lyrics by Sid Wayne.  
RCA LP APL-0283 (1973)  
Did not chart.  
BMG Songs Inc. ASCAP.

**8. AN AMERICAN TRILOGY**

Music and lyrics by Mickey Newbury.  
RCA 74-0672 (1972) No. 66\*  
Acuff-Rose Music Inc./AR Pub. BMI.

**9. RAGS TO RICHES**

Music and lyrics by Richard Adler and Jerry Ross.  
RCA 47-9980 (1971)  
Did not chart.  
The Songwriters Guild. ASCAP.

**10. FOR OL' TIMES SAKE**

Music and lyrics by Tony Joe White.  
RCA APBO-0088 (1973)  
Did not chart.  
White Haven Music Inc./Tennessee Swamp Fox. ASCAP.

## 11. MY BOY

Music by Jean Bourtayre and Claude Francois, English lyrics by Phil Coulter and Bill Martin.  
RCA PB-10191 (1975)  
No. 20\*  
Obie Music. BMI.

## 12. PIECES OF MY LIFE

Music and lyrics by Troy Seals.  
RCA PB-10401 (1975)  
Did not chart.  
Irving Music Inc. BMI.

## 13. THE LAST FAREWELL

Music and lyrics by R. A. Webster and Roger Whittaker.  
RCA LP APL-1506 (1976)  
Did not chart.  
Croma Music Co. ASCAP.

## 14. I'LL NEVER FALL IN LOVE AGAIN

Music by Burt Bacharach, lyrics by Hal David.  
RCA LP APL-1506 (1976)  
Did not chart.  
Feadbach Music/Jac Music Company Inc. ASCAP.

## 15. PLEDGING MY LOVE

Music and lyrics by Ferdinand Washington and Don Robey.  
RCA PB-10998 (1977)  
Did not chart.  
Music Corporation of America Inc./Wemar Music Corp. BMI.

UNRELEASED  
BONUS CUT

## 16. SEPARATE WAYS

Music and lyrics by Bobby West and Richard Mainegra.  
(1972) Previously unreleased.

TIME  
LIFE  
MUSIC

PRESIDENT: Steven L. Jones  
SENIOR VICE PRESIDENT: Martin Champagne  
VICE PRESIDENTS: Jim Fishel, Lisa Kauffman,  
Donna Pickett, Mark Stevens, Duff Stokes  
FINANCIAL DIRECTOR: Michael L. Ulice  
EXECUTIVE PRODUCER: Robert Hull  
PROJECT MANAGER: Elizabeth Riedl  
PRODUCTION DIRECTOR: Karen Hill  
RECORDING PRODUCER/CONSULTANT: Joe Sesfy  
MASTERING ENGINEER: Dennis Drake  
SPECIAL CONTRIBUTORS: Lynne O'Connor, Tish King

THE AUTHOR: Charles K. Wolfe teaches English at Middle Tennessee State University. He has written or co-authored numerous books on music, including *The Life and Legend of Leadbelly*, winner of a Deems Taylor ASCAP award.

DESIGN: Red Herring Design Inc.

PICTURE CREDITS: Front cover photo and CD tray back photos © Corbis; booklet back cover, page 5, and page 13 photos courtesy Pictorial Press Limited; page 2 and CD tray liner photos courtesy UPI/Corbis-Bettmann; page 6 photo © Doc Pele/Stills/RETNA LTD USA; page 9 photo © Archive Photos; memorabilia photos © Les Burke/Showtime Archives (Toronto).

FROM THE HEART was produced by Time-Life Music in cooperation with BMG Music. Manufactured for Time-Life Music by BMG Distribution, a Unit of BMG Entertainment.



THIS COMPILATION © 1998 BMG Entertainment. Under license to Time-Life Music from The RCA Records Label, a Unit of BMG Entertainment • Tmk(s) © Registered • Marca(s) Registrada(s) ® ® General Electric Co., USA • The BMG logo is a trademark of BMG Music • © 1998 BMG Entertainment.

TIME-LIFE MUSIC is a division of Time Life Inc. © 1998 Time Life Inc. All rights reserved. Printed in U.S.A.  
TIME LIFE is a trademark of Time Warner Inc. U.S.A.

R806-03 / 07863-69402-2