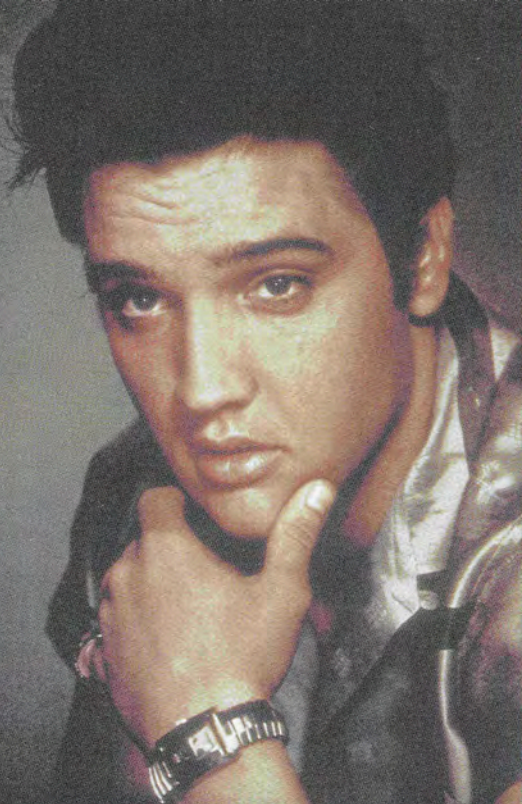


THE ELVIS PRESLEY COLLECTION

ELVIS

TIME
LIFE

THE ELVIS PRESLEY COLLECTION • THE ROCKER

R806-06
07863-69405-2

Disc One

1. MYSTERY TRAIN
2. LONG TALL SALLY
3. PARALYZED
4. I GOT STUNG
5. TUTTI FRUTTI
6. I BEG OF YOU
7. DONCHA THINK IT'S TIME
8. MAKE ME KNOW IT
9. GIRL OF MY BEST FRIEND
10. ROCK-A-HULA BABY
11. KISSIN' COUSINS
12. DIRTY, DIRTY FEELING
13. THE FOOL
14. I WASHED MY HANDS IN MUDDY WATER
15. SEE SEE RIDER
16. WAY DOWN

Disc Two

1. MONEY HONEY
2. RIP IT UP
3. SHAKE, RATTLE AND ROLL
4. ONE-SIDED LOVE AFFAIR
5. AIN'T THAT LOVING YOU BABY
6. HOT DOG
7. DIXIELAND ROCK
8. I GOTTA KNOW
9. PUT THE BLAME ON ME
10. I'M COMIN' HOME
11. WITCHCRAFT
12. TOO MUCH MONKEY BUSINESS
13. PATCH IT UP
14. POLK SALAD ANNIE
15. **UNRELEASED BONUS CUT:**
BURNING LOVE

THIS COMPILATION © 1998 BMG Entertainment. Under license to Time-Life Music from The RCA Records Label, a Unit of BMG Entertainment • Tmk(s) ® Registered • Marcs(s) Registrado(s) ® ® General Electric Co., USA • The BMG logo is a trademark of BMG Music • © 1998 BMG Entertainment. Manufactured for Time-Life Music by BMG Distribution, a Unit of BMG Entertainment. Printed in U.S.A. Unauthorized duplication is a violation of applicable laws. FOR INFORMATION ABOUT THIS AND OTHER TIME-LIFE MUSIC RELEASES, CALL US TOLL-FREE AT (800) 488-4669, OR WRITE TO TIME-LIFE MUSIC, 1450 E. PARHAM ROAD, RICHMOND, VA 23280-2300.

R806-06
07863-69405-2

THE ELVIS PRESLEY COLLECTION • THE ROCKER

TIME
LIFE

General Electric Co., USA • The BMG logo is a trademark of BMG Music • © 1998

ELVIS

THE ELVIS PRESLEY COLLECTION

1. MYSTERY TRAIN
2. LONG TALL SALLY
3. PARALYZED
4. I GOT STUNG
5. TUTTI FRUTTI
6. I BEG OF YOU
7. DONCHA THINK IT'S TIME
8. MAKE ME KNOW IT
9. GIRL OF MY BEST FRIEND
10. ROCK-A-HULA BABY
11. KISSIN' COUSINS
12. DIRTY, DIRTY FEELING
13. THE FOOL
14. I WASHED MY HANDS IN MUDDY WATER
15. SEE SEE RIDER
16. WAY DOWN

TIME
LIFE
MUSIC



R806-06

07863-69405-2

THIS COMPILATION © 1998 BMG Entertainment. Under license to Time-Life Music from The RCA Records label, a unit of BMG Entertainment. TM & Reg. ®. All Rights Reserved. © 1998 BMG Entertainment. Made in U.S.A.

ELVIS

THE ELVIS PRESLEY COLLECTION

1. MONEY HONEY
2. RIP IT UP
3. SHAKE, RATTLE AND ROLL
4. ONE-SIDED LOVE AFFAIR
5. AIN'T THAT LOVING YOU BABY
6. HOT DOG
7. DIXIELAND ROCK
8. I GOTTA KNOW
9. PUT THE BLAME ON ME
10. I'M COMIN' HOME
11. WITCHCRAFT
12. TOO MUCH MONKEY BUSINESS
13. PATCH IT UP
14. POLK SALAD ANNIE
15. BURNING LOVE

TIME

LIFE



R806-06

07863-69405-2

2

THIS COMPILATION © 1998 BMG Entertainment. Under license to Time-Life Music from the RCA Record label. A part of Time-Life Entertainment • Time-Life © Registered • Mercury Digital Technology © General Electric Co., USA • The BMG logo is a trademark of BMG Music • © 1998

Manufactured by BMG Distribution • Distributed by BMG Entertainment • Made in U.S.A.

1

1. MYSTERY TRAIN

Music and lyrics by Sam C. Phillips and Herman Parker Jr.
Sun 223 (1955) Did not chart.
Hi-Lo Music Inc./Unichappell Music Inc. BMI.

2. LONG TALL SALLY

Music and lyrics by Robert Blackwell, Enotris Johnson and Richard Penniman.
RCA LP LPM-1382 (1956)
Did not chart.
Sony/ATV Songs ATV Venice SP.
BMI.

3. PARALYZED

Music and lyrics by Otis Blackwell and Elvis Presley.
RCA EPA-992 (1956)
No. 59*
EMI Unart Catalog Inc./R and H Music Elvis Presley. BMI.

4. I GOT STUNG

Music and lyrics by Aaron Schroeder and David Hess.
RCA 47-7410 (1958) No. 3*
Gladys Music/Rachel's Own Music.
ASCAP.

5. TUTTI FRUTTI

Music and lyrics by Dorothy LaBostrie, Joe Lubin and Richard Penniman.
RCA LP LPM-1254 (1956)
Did not chart.
Sony/ATV Songs ATV Venice SP.
BMI.

6. I BEG OF YOU

Music and lyrics by Rose Marie McCoy and Kelly Owens.
RCA 47-7150 (1958) No. 3*
R and H Music Elvis Presley. BMI.

7. DONCHA THINK IT'S TIME

Music and lyrics by Willie Dixon and Clyde Otis.
RCA 47-7240 (1958) No. 15*
R and H Music Elvis Presley. BMI.

8. MAKE ME KNOW IT

Music and lyrics by Otis Blackwell.
RCA LP LSP-2231 (1960)
Did not chart.
R and H Music Elvis Presley. BMI.

9. GIRL OF MY BEST FRIEND

Music and lyrics by Sam Bobrick and Beverly Ross.
RCA LP LSP-2231 (1960)
Did not chart.
R and H Music Elvis Presley. BMI.

10. ROCK-A-HULA BABY

Music and lyrics by Fred Wise, Benjamin Weisman and Dolores Fuller.
RCA 47-7968 (1961) No. 23*
Bienstock Publishing
Company/Chappell & Co. Inc./
Erika Publishing. ASCAP.

11. KISSIN' COUSINS

Music and lyrics by Fred Wise and Warren Nadel.
RCA 47-8307 (1964) No. 12*
Gladys Music/Nadel Music. ASCAP.

* Indicates highest *Billboard* chart position.

12. DIRTY, DIRTY FEELING

Music and lyrics by Mike Stoller
and Jerry Leiber.

RCA LP LSP-2231 (1960)

Did not chart.

Mike Stoller Music/Jerry Leiber
Music, ASCAP.

13. THE FOOL

Music and lyrics by Lee Hazlewood.

RCA LP LSP-4460 (1971)

Did not chart.

Mother Texas Production Inc.
ASCAP.

**14. I WASHED MY HANDS IN
MUDDY WATER**

Music and lyrics by Joe Babcock.

RCA 07863 66670-2 (1970)

Did not chart.

Mariposa Music Inc. BMI.

15. SEE SEE RIDER

Music and lyrics by
Gertrude McRaney.

RCA LP LSP-4362 (1970)

Did not chart.

MCA Music Publishing/A division of
Universal Studios Inc. ASCAP.

16. WAY DOWN

Music and lyrics by
Layng Martine Jr.

RCA PB-10998 (1977)

No. 18*

Ray Stevens Music. BMI.



With fans, mid-'50s.

2

1. MONEY HONEY

Music and lyrics by Jesse A. Stone.
RCA EPA-821 (1956) No. 76*
Walden Music Inc. ASCAP.

2. RIP IT UP

Music and lyrics by
Robert Blackwell and
John Marascalco.
RCA LP LPM-1382 (1956)
Did not chart.
Sony/ATV Songs ATV Venice SP.
BMI.

3. SHAKE, RATTLE AND ROLL

Music and lyrics by
Charles E. Calhoun.
RCA 47-6642 (1956)
Did not chart.
Unichappell Music Inc. BMI.

4. ONE-SIDED LOVE AFFAIR

Music and lyrics by Bill Campbell.
RCA LP LPM-1254 (1956)
Did not chart.
EMI Unart Catalog Inc. BMI.

**5. AIN'T THAT LOVING
YOU BABY**

Music and lyrics by Ivory Joe
Hunter and Clyde Otis.
RCA 47-8340 (1964) No.
16*
R and H Music Elvis Presley. BMI.

6. HOT DOG

Music and lyrics by Jerry Leiber
and Mike Stoller.
RCA LP LPM-1515 (1957)
Did not chart.
Mike Stoller Music/Jerry Leiber
Music. ASCAP.

7. DIXIELAND ROCK

Music and lyrics by Rachel Frank
and Aaron Schroeder.
RCA LP LPM-1884 (1958)
Did not chart.
Rachel's Own Music/Gladys Music.
ASCAP.

8. I GOTTA KNOW

Music and lyrics by Paul Evans
and Matt Williams.
RCA 47-7810 (1960) No. 20*
Port Music Inc./Gladys Music.
ASCAP.

9. PUT THE BLAME ON ME

Music and lyrics by Fred Wise,
Kathleen Twomey and
Norman Blagman.
RCA LP LSP-2370 (1961)
Did not chart.
Gladys Music/Erika Publishing.
ASCAP.

10. I'M COMIN' HOME

Music and lyrics by Charlie Rich.
RCA LP LSP-2370 (1961)
Did not chart.
Knox Music Inc./R and H Music
Elvis Presley. BMI.

11. WITCHCRAFT

Music and lyrics by Dave
Bartholomew and Pearl King.
RCA 47-8243 (1963)
No. 32*
Elvis Presley Music/EMI Unart
Catalog Inc. BMI.

12. TOO MUCH MONKEY BUSINESS

Music and lyrics by Chuck Berry.
RCA PRS-279 (1968)
Did not chart.
Arc Music Corp./Salee Music
Publishing Company. BMI.

13. PATCH IT UP

Music and lyrics by Rory Bourke
and Eddie Rabbit.
RCA 47-9916 (1970) No. 11*
Careers-BMG Music Publishing Inc./
R and H Music Elvis Presley. BMI.

14. POLK SALAD ANNIE

Music and lyrics by Tony Joe White.
RCA LP LSP-4362 (1970)
Did not chart.
Combine Music Corp. BMI.

UNRELEASED
BONUS CUT

BURNING LOVE

Music and lyrics by Dennis Linde.
(1972) Previously unreleased.
Combine Music Corp. BMI.

TIME
LIFE
MUSIC

PRESIDENT: Steven L. James
SENIOR VICE PRESIDENT: Martin Shampaine
VICE PRESIDENTS: Jim Fishel, Lisa Kauffman,
Donna Pickett, Mark Stevens, Duff Stokes
FINANCIAL DIRECTOR: Michael L. Ulica
EXECUTIVE PRODUCER: Robert Hull
PROJECT MANAGER: Elizabeth Riedl
PRODUCTION DIRECTOR: Karen Hill
RECORDING PRODUCER/CONSULTANT: Joe Sasfy
MASTERING ENGINEER: Dennis Drake
SPECIAL CONTRIBUTORS: Lynne O'Connor, Tish King

THE AUTHOR: Charles K. Wolfe teaches English at
Middle Tennessee State University. He has written
or co-authored numerous books on music, including
The Life and Legend of Leadbelly, winner of a Deems
Taylor ASCAP award.

DESIGN: Red Herring Design Inc.

PICTURE CREDITS: front cover, page 5 and CD tray
liner photos courtesy Michael Ochs Archives/Venice, CA;
booklet back cover and page 6 photos courtesy Pictorial
Press Limited; page 2 photo courtesy The Kobal Collection;
page 9 photo courtesy Personality Photos, Inc.; page 10
photo © Corbis; page 13 photo courtesy the Everett
Collection; CD inlay back photo © London Features
International.

THE **ROCKER** was produced by Time-Life Music in
cooperation with BMG Music. Manufactured for
Time-Life Music by BMG Distribution, a Unit of
BMG Entertainment.



THIS COMPILATION © 1998 BMG Entertainment.
Under license to Time-Life Music from The RCA
Records Label, a Unit of BMG Entertainment • Tmk(s)
® Registered • Marca(s) Registrada(s) ® ® General
Electric Co., USA • The BMG logo is a trademark of
BMG Music • © 1998 BMG Entertainment.

TIME-LIFE MUSIC is a division of Time Life Inc. © 1998
Time Life Inc. All rights reserved. Printed in U.S.A.
TIME LIFE is a trademark of Time Warner Inc. U.S.A.

R806-06 / 07863-69405-2



Ain't That Loving You Baby, though
recorded while Elvis was on leave
from the army in June of 1958, wasn't
released as a single until 1964.